

# **DECEMBER 2014 Financial Report**

**C I T Y   O F   S C H E R T Z**

Prepared By:  
The Finance Department  
FEBRUARY 28, 2015

































































































































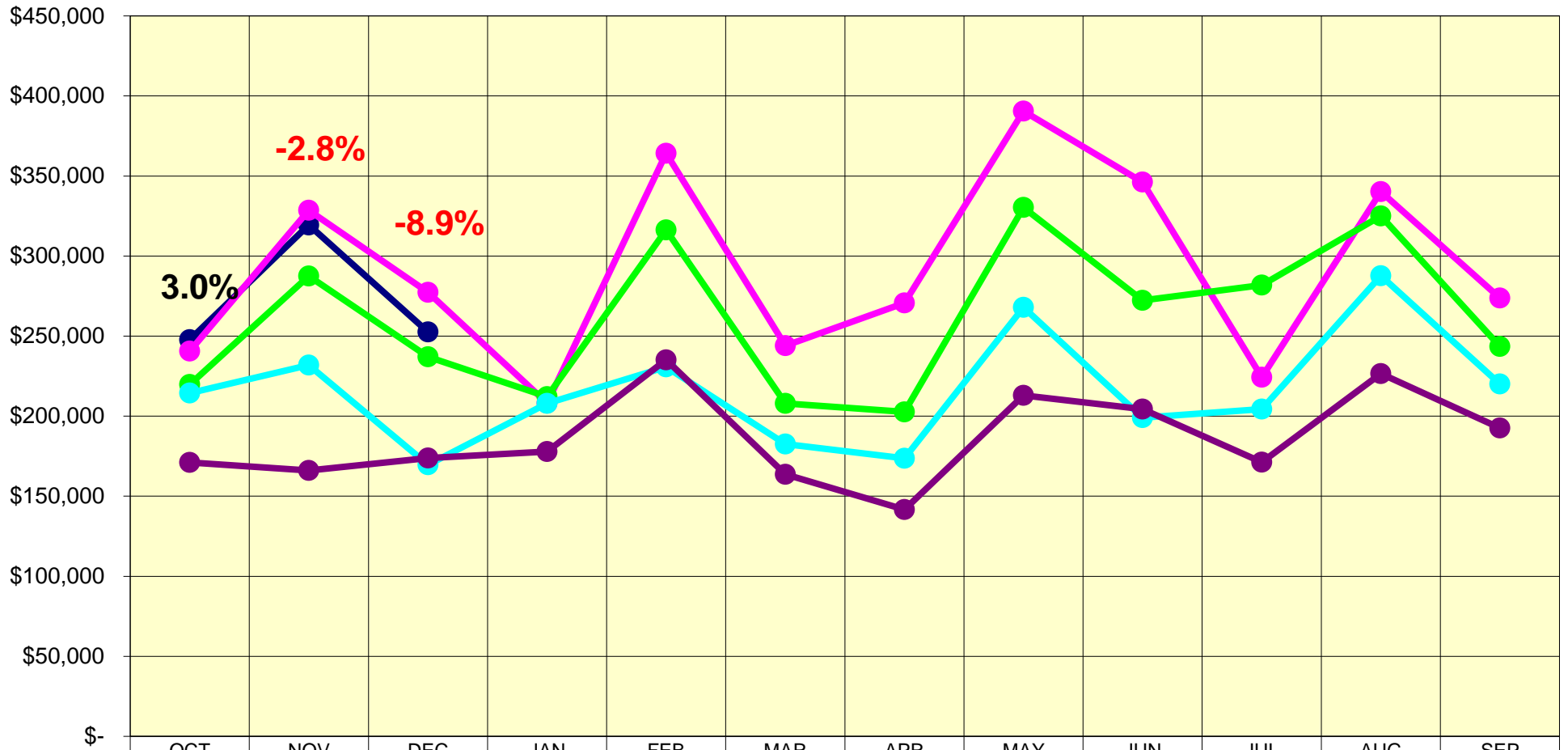








# 4B SALES TAX



	OCT	NOV	DEC	JAN	FEB	MAR	APR	MAY	JUN	JUL	AUG	SEP
2014-15	247,750	319,452	252,513									
2013-14	240,623	328,635	277,289	208,130	364,222	243,967	270,738	390,528	346,223	224,288	340,166	273,715
2012-13	219,717	287,520	237,123	212,096	316,358	207,915	202,689	330,324	272,337	281,818	325,062	243,585
2011-12	214,497	231,818	169,596	207,911	230,700	182,541	173,698	267,965	199,040	204,426	287,707	220,125
2010-11	171,042	166,132	173,802	177,864	235,199	163,627	141,650	212,924	204,332	171,256	226,531	192,615